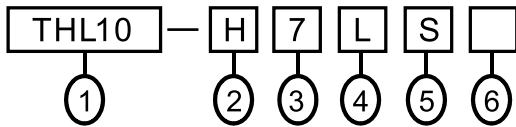


CHARACTERISTICS



Lamp	Cold white LED	Warm white LED	Halogen lamp	Halogen lamp
Watt	8W		55W	70W
Voltage	12VAC/DC,24VAC/DC,90~260VAC		12VAC/DC	24VAC/DC
Illumination at 50cm	10000LUX. Min.	5500LUX. Min.	4500LUX. Min.	6800LUX. Min.
Life	30000hrs. Min.		800hrs. Min.	
IP rating	IP65			
Glass	Tempered glass			

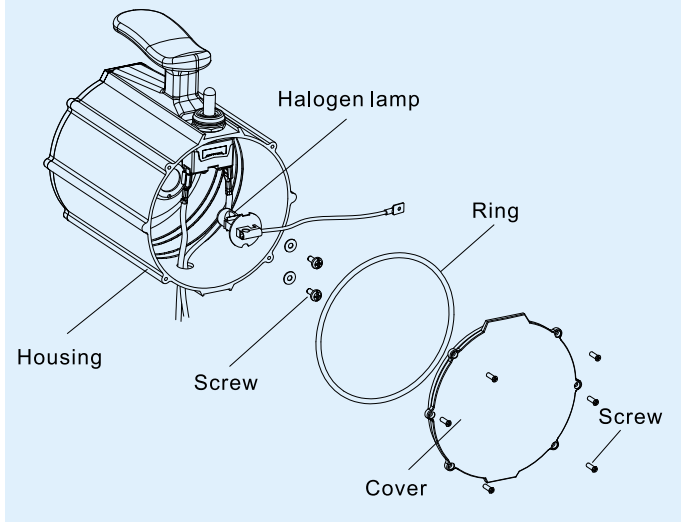
MODEL DESIGNATION



Item	Signal	Description
1.Type	THL10	Ø100mm Machine Lights
2.Lamp	7W	Warm white LED
	7C	Cold white LED
	H	Halogen Lamp
3.Voltage	2	100~240VAC(LED)
	7	24VAC/DC
	9	12VAC/DC
4.Length	L	310mm+390mm
	M	310mm+115mm
	R	220mm+220mm
	S	--
5.Base	Space	45mmX45mm
	L	L Type Base
	S6	60mmX60mm
6.Color	T	Triangle Base
	Space	Silver
	B	Black

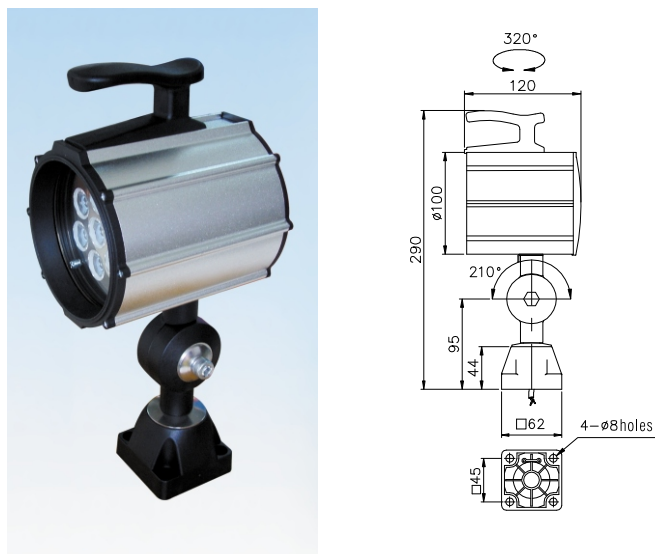
HALOGEN LAMP REPLACEMENT MENU

- Step 1. Loosen the screws.
- Step 2. Release cover and O-ring.
- Step 3. Loosen the screws and replace the Halogen lamp.

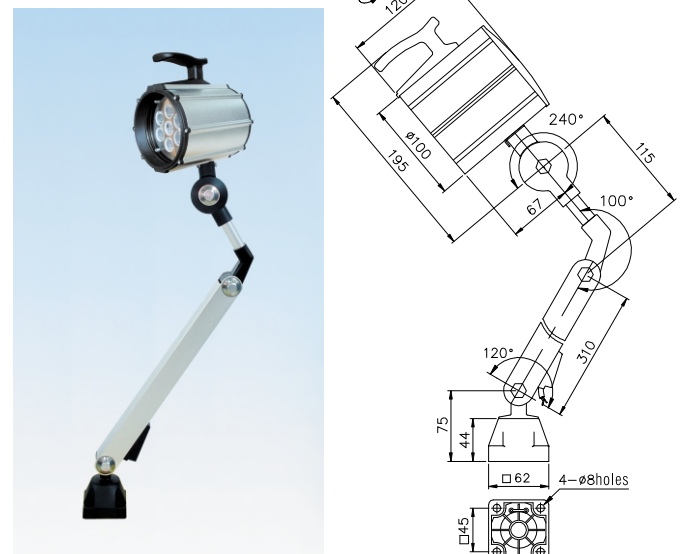


DIMENSIONS

THL10-S

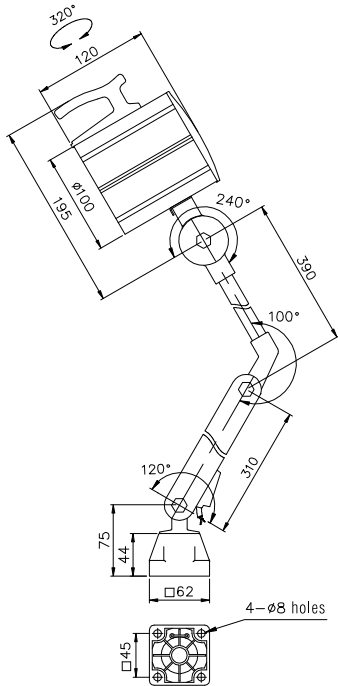


THL10-M

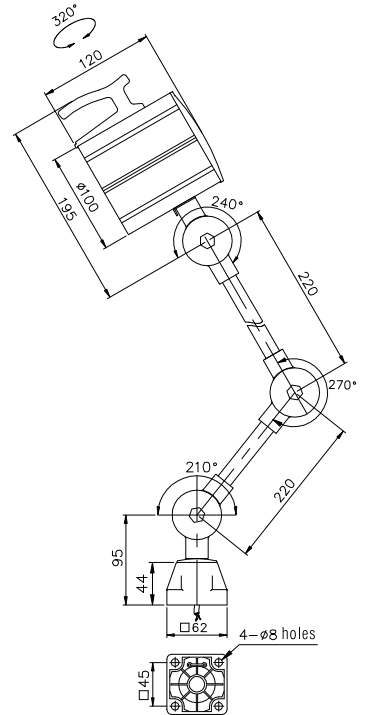


■ DIMENSION

THL10-L

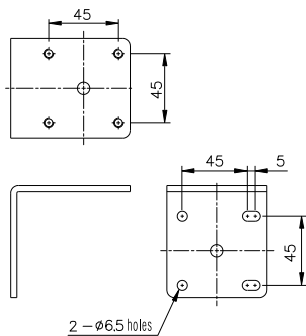


THL10-R

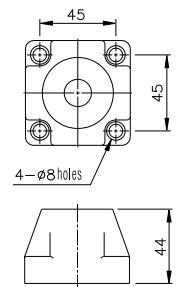


■ BASE DIMENSION

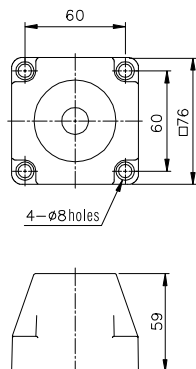
L Type Base
(THL10-A)



Square 45mmX45mm
(THL10-S4)



Square 60mmX60mm
(THL10-S6)



Triangle
(THL10-T)

