

## Features



- Diversified operating ways, handles and plates.
- Unique modular design of contact blocks keeps internal parts from falling apart when contact blocks are disassembled or replaced.
- Can assemble or disassemble contact blocks to suit for various models yet without risking excessive stock.
- Contact blocks can be added click-on easily, no need to unscrew.
- Connecting screws are fastened from the back rather than normally from the side. It makes wiring easier.
- A special design to keep connecting terminals and screws in the contact blocks can prevent users from electric shocking.
- All the connecting pieces of terminals are covered to avoid electric shocking.
- Capacities are differentiated by colors of contact blocks: blue for 10A; gray for 16A and black for 25A.



## Specifications

Voltage	Capacity	AC-3(kw)		AC-23A(kw)		AC-21A lu=lth	Rated voltage	AC-3(HP)		Motor load
		3 ph.	1 ph.	3 ph.	1 ph.			3 ph.	1 ph.	
220V~240V		1.5	0.55	1.8	0.75	10A	120V 240V	0.75 1	0.33 0.75	10A
380V~440V		2.2	0.75	3	1.1					
660V~690V		2.2	0.75	3	1.1					
220V~240V		3	1.5	4	2.2	16A	120V 240V	1.5 3	0.5 1.5	16A
380V~440V		5.5	2.2	7	3					
660V~690V		5.5	2.2	7	3					
220V~240V		4	3	5.5	3	25A	120V 240V 480V	3 7.5 10	1.5 3 5	25A
380V~440V		7.5	3.7	11	5.5					
660V~690V		7.5	3.7	11	5.5					

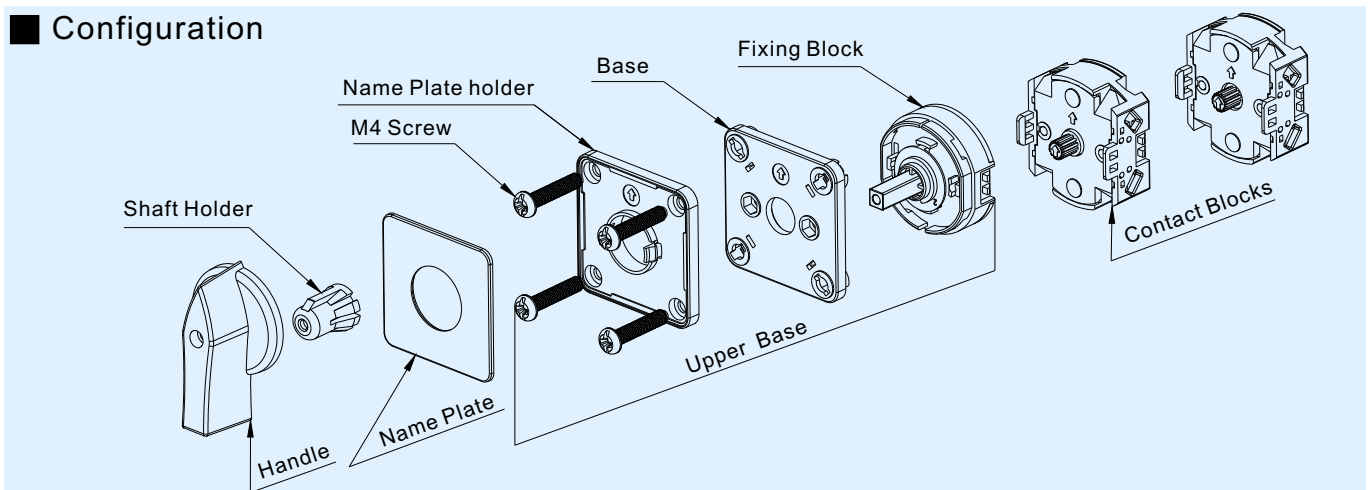
IEC 60947-3, EN 60947-3

VDE 0660 part 107

HD A300

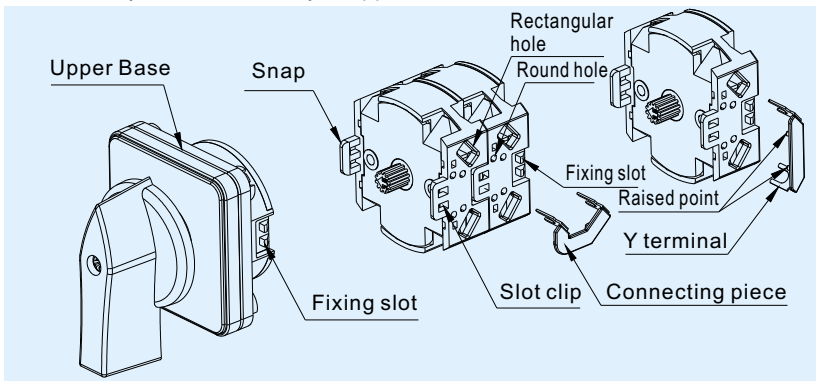
UL 77B7

## Configuration



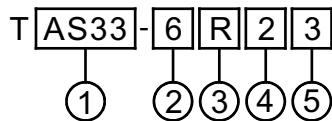
For panel series No.48 and No.64, the handles, engraving plates, upper bases and contacts can be disassembled by DIY.

- Assembly and disassembly of upper base and contact or those of two contacts.



- Assembly between upper base and contact block: point and push the raised part of the upper base into the hole of contact block.
- Assembly between contact blocks: point and push the raised part of the contact block into the hole of another contact blocks.
- Disassembly: lift the raised part of contact with “-” shape screwdriver.
- Assembly of connecting piece: insert the “Y” shape terminal of the connecting piece into the rectangular holes flanking the contact and press the raised point of connecting piece down into the round hole of contact block.

## Model designation

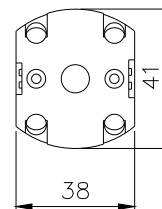
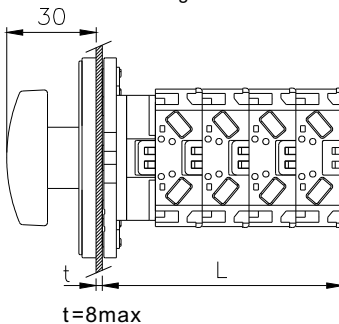
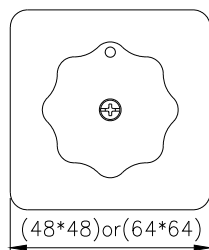


Designation	Signal	Description
1. Control Type	AS33	AS33(3Ø3W)
	AS34	AS34(3Ø4W)
	VS33	VS33(3Ø3W)
	VS34	VS34(3Ø4W)
	VS334	VS33(3Ø3W)/VS34(3Ø4W)
	AV33	VS33(3Ø3W)/AS33(3Ø3W)

2. Size	4	48*48
	6	64*64
3. Face and hands color	None	Silver panel black hands
	R	Huang Hung hands panel
4. Capacity	1	10A
	2	16A
	3	25A
5. Nos. of	None	2CT
	3	3CT

● All these series of switches are fitted with octagonal handles. ● 2CT or 3CT can be used for TAS33 series.

## Dimensions

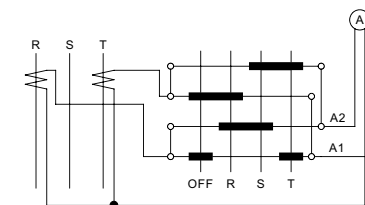
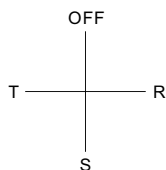


Stack	L
One Stack	32
Two Stacks	47
Three Stacks	62
Four Stacks	77
Five Stacks	92
Six Stacks	107

## Plate, Contact and Wiring diagram.

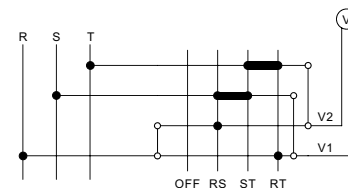
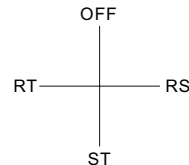
### TAS33-□□

AS(3Ø3W 2CT)



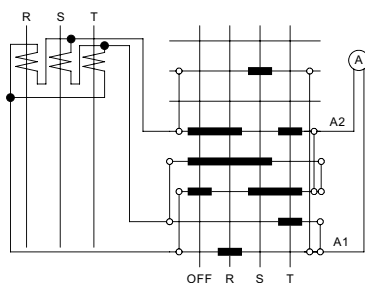
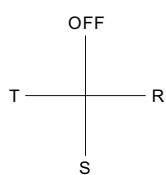
### TVS33-□□

VS(3Ø3W)



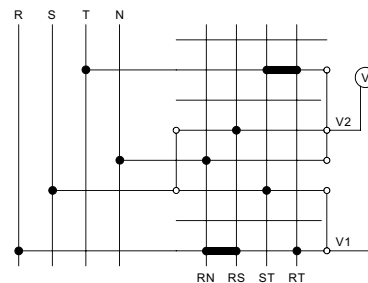
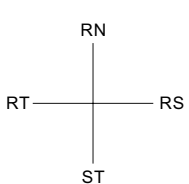
### TAS33-□□3

AS(3Ø3W 3CT)



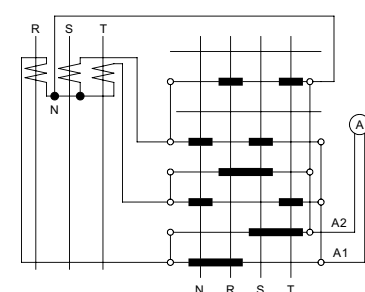
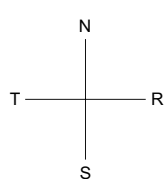
### TVS34-□□

VS(3Ø4W)



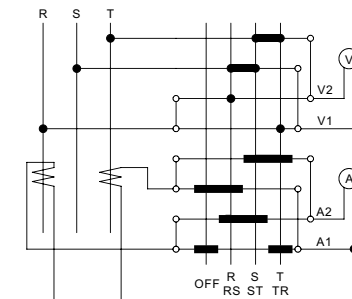
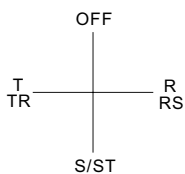
### TAS34-□□

AS(3Ø4W 3CT)



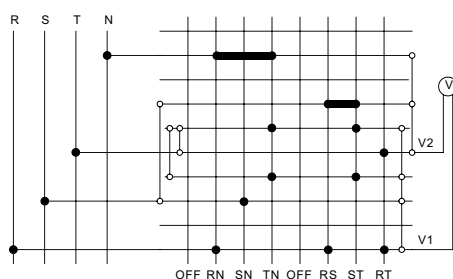
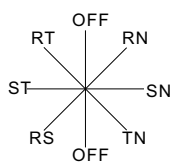
### TAV33-□□

AS(3Ø3W 2CT)  
VS(3Ø3W)

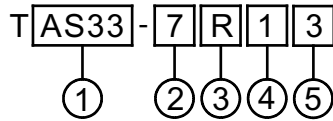


### TVS334-□□

VS(3Ø3W)  
VS(3Ø4W)



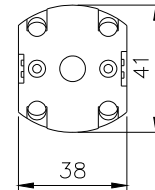
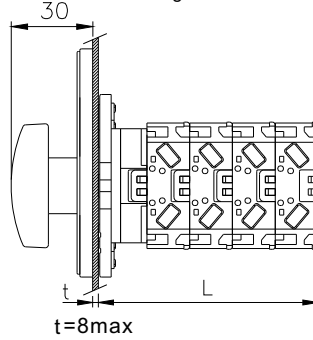
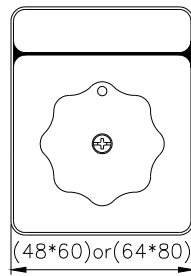
## Model designation



Designation	Signal	Description	2. Size	5	48*60
1. Control Type	AS33	AS33(3Ø3W)	3. Face and hands color	None	Silver panel black hands
	AS34	AS34(3Ø4W)		R	Huang Hung hands panel
	VS33	VS33(3Ø3W)	4. Capacity	1	10A
	VS34	VS34(3Ø4W)		2	16A
	VS334	VS33(3Ø3W)/VS34(3Ø4W)		3	25A
	AV33	VS33(3Ø3W)/AS33(3Ø3W)	5. Nos. of	None	2CT
			3	3CT	

● All these series of switches are fitted with octagonal handles. ● 2CT or 3CT can be used for TAS33 series.

## Dimensions

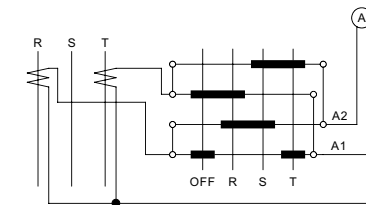
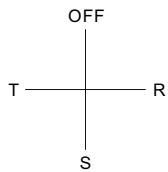


Stack	L
One Stack	32
Two Stacks	47
Three Stacks	62
Four Stacks	77
Five Stacks	92
Six Stacks	107

## Plate, Contact and Wiring diagram.

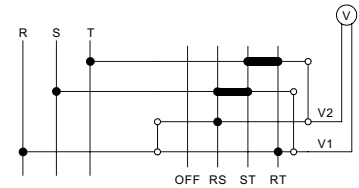
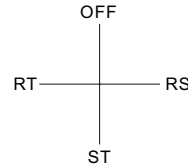
### TAS33-□□

AS(3Ø3W 2CT)



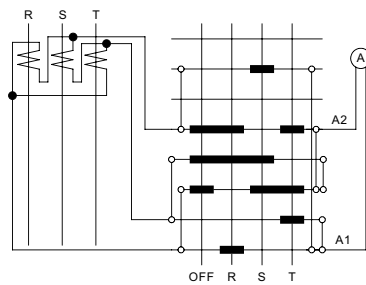
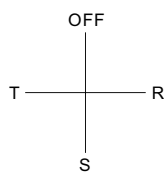
### TVS33-□□

VS(3Ø3W)



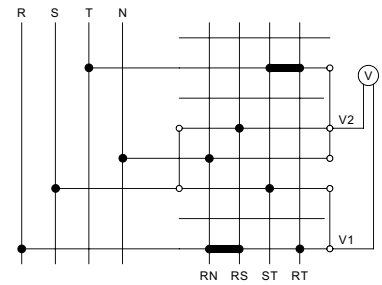
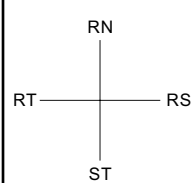
### TAS33-□□3

AS(3Ø3W 3CT)



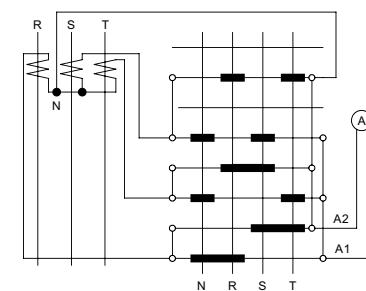
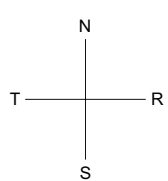
### TVS34-□□

VS(3Ø4W)



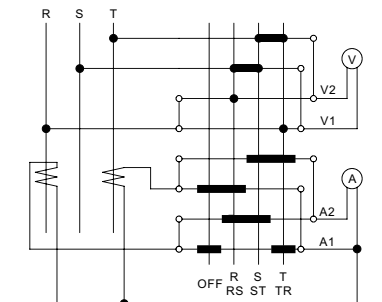
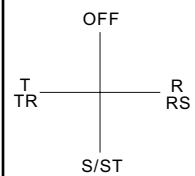
### TAS34-□□

AS(3Ø4W 3CT)



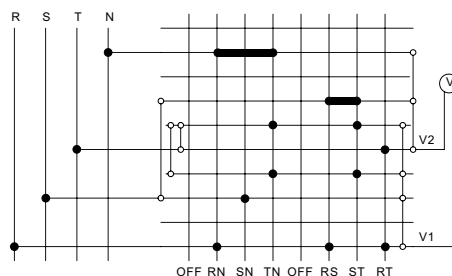
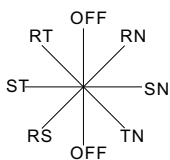
### TAV33-□□

AS(3Ø3W 2CT)  
VS(3Ø3W)



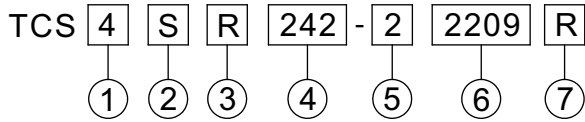
### TVS334-□□

VS(3Ø3W)  
VS(3Ø4W)



■ Before placing an order for finished products, please refer to the explanation of model numbers shown in this page.

■ Model designation

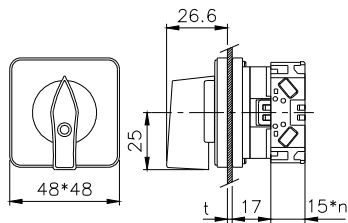


Designation	Signal	Description
1. Size	4 6	48*48 64*64
2. Handle	S L O	Short handle Long handle Octagonal handle
3. Face and hands color	None R	Silver panel black hands Huang Hung hands panel

4. Position, turn angle plate number	240~842	See page (M) 8
5. Capacity	1	10A
	2	16A
	3	25A
6. Wiring diagram number		See page (M) 9~(M) 20
7. Operation	None	Hold
	R	Spring return (45°, 2 position, 3 position only)

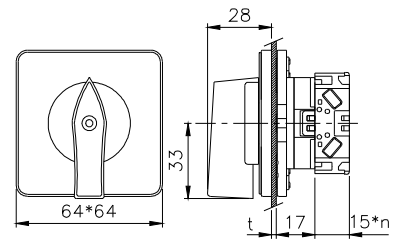
■ Dimendions

TCS4S □-□□□□



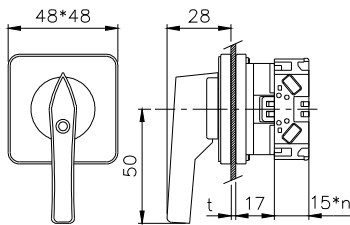
t=6max  
N=number of contact blocks

TCS6S □-□□□□



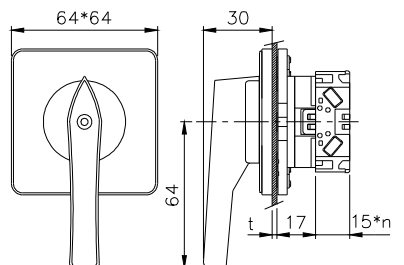
t=8max  
N=number of contact blocks

TCS4L □-□□□□



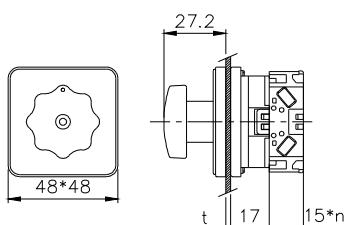
t=6max  
N=number of contact blocks

TCS6L □-□□□□



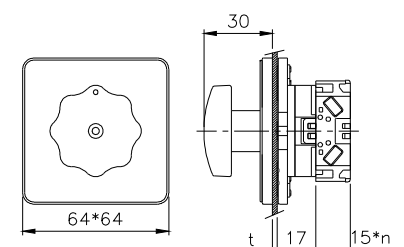
t=8max  
N=number of contact blocks

TCS4O □-□□□□



t=8max  
N=number of contact blocks

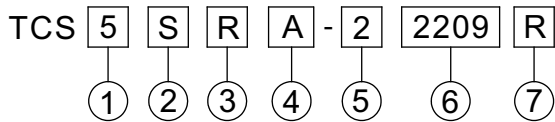
TCS6O □-□□□□



t=8max  
N=number of contact blocks

Before placing an order for finished products, please refer to the explanation of model numbers shown in this page.

## Model designation

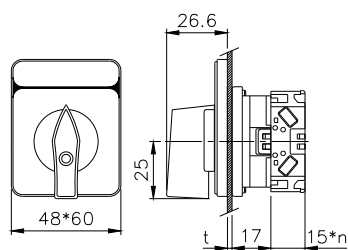


Designation	Signal	Description
1. Size	5	48*60
	7	64*80
2. Handle	S	Short handle
	L	Long handle
	O	Octagonal handle
3. Face and hands color	None	Silver panel black hands
	R	Huang Hung hands panel

4. Long platel number	A~Z	See page (M) 7
5. Capacity	1	10A
	2	16A
	3	25A
6. Wiring diagram number		See page (M) 9~(M) 20
7. Operation	None	Hold
	R	Spring return (45°, 2 position, 3 position only)

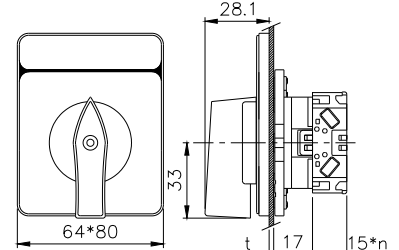
## Dimensions

TCS5S □□-□□□



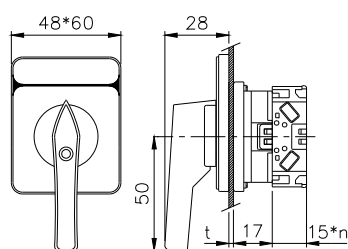
t=6max  
N=number of contact blocks

TCS7S □□-□□□



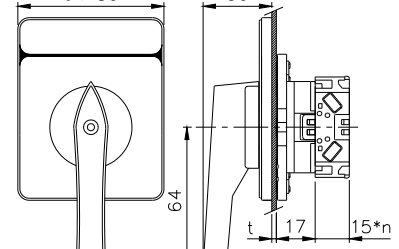
t=8max  
N=number of contact blocks

TCS5L □□-□□□



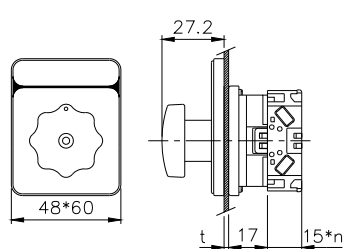
t=6max  
N=number of contact blocks

TCS7L □□-□□□



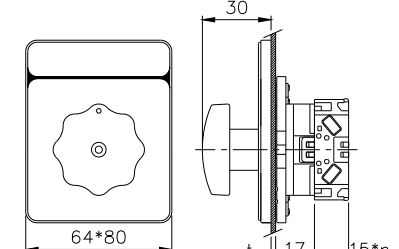
t=8max  
N=number of contact blocks

TCS5O □□-□□□



t=8max  
N=number of contact blocks

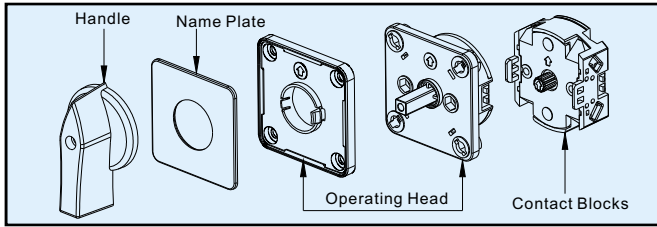
TCS7O □□-□□□



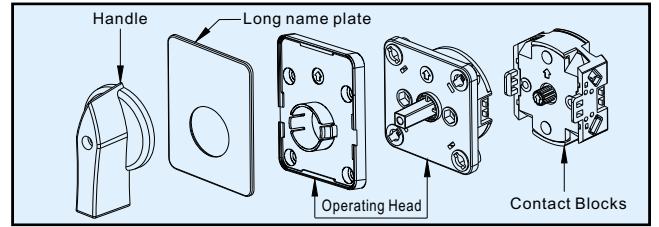
t=8max  
N=number of contact blocks

As to the order of components for DIY assembly, please refer to the following assembly illustration diagram.

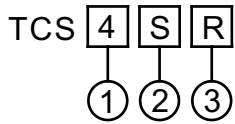
● 48\*48mm and 64\*64mm series sub-assembly



● 48\*60mm and 64\*80mm series sub-assembly



## Handle designation

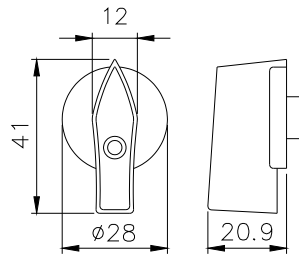


Designation	Signal	Description
1.Size	4	48*48mm
	6	64*64mm

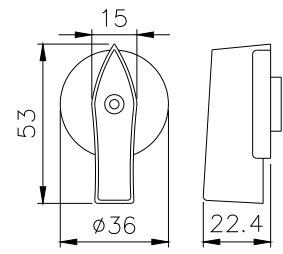
2.Handle	S	Short handle
	L	Long handle
	O	Octagonal handle
3.Face and hands color	None	Silver panel black hands
	R	Huang Hung hands panel

## Dimensions

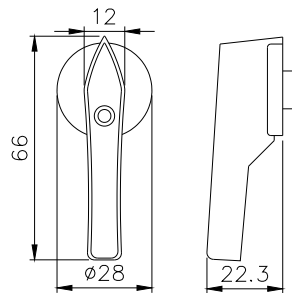
TCS4S



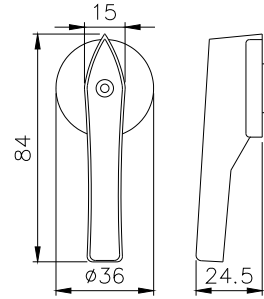
TCS6S



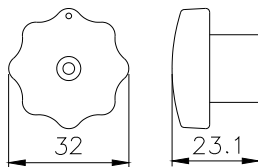
TCS4L



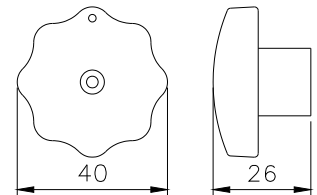
TCS6L



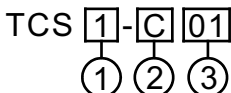
TCS4O



TCS6O



## Contact Block designation

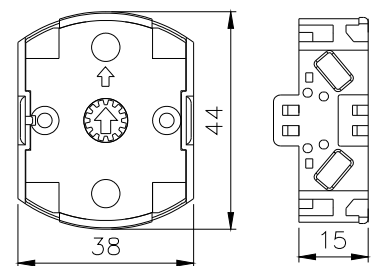
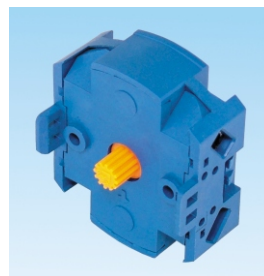


Designation	Signal	Description
1.Capacity	1	10A
	2	16A
	3	25A
2.No. of Contacts Fitted	S	Single-point contact
	C	Double-point contact
3.Contact blocks number	01~A1	See page (M)9~(M)20

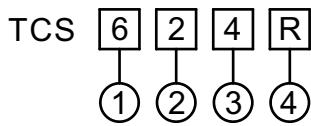
## Dimensions

TCS□-C01~CA1

TCS□-S01~SA1



## Upper base designation

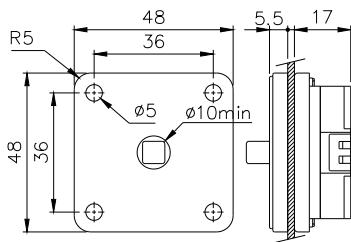


Designation	Signal	Description
1.Size	4	48*48
	5	48*60
	6	64*64
	7	64*80

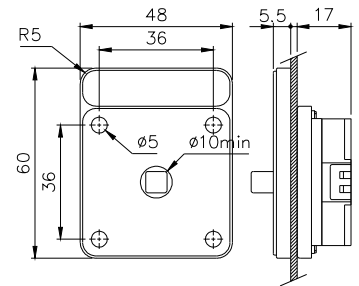
2.Position	2~8	2~8 Positions
3.Turn angle	4	45°
	9	90°
4.Operation (45°,2 position 3 position only)	None	Hold
	R	Spring return(except 90°)

## Upper base dimension

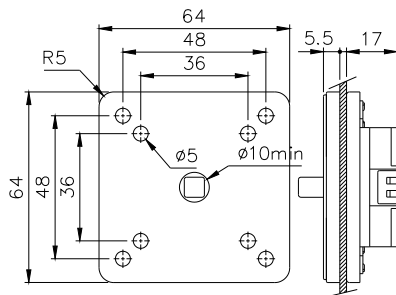
TCS4      



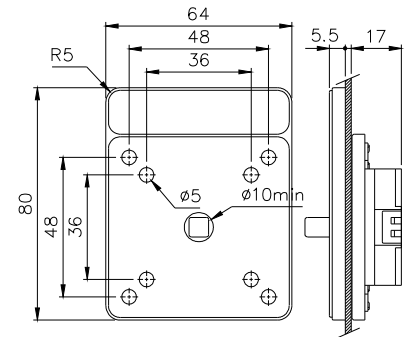
TCS5      



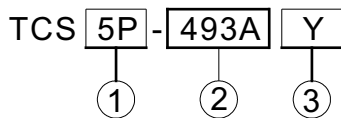
TCS6      



TCS7      

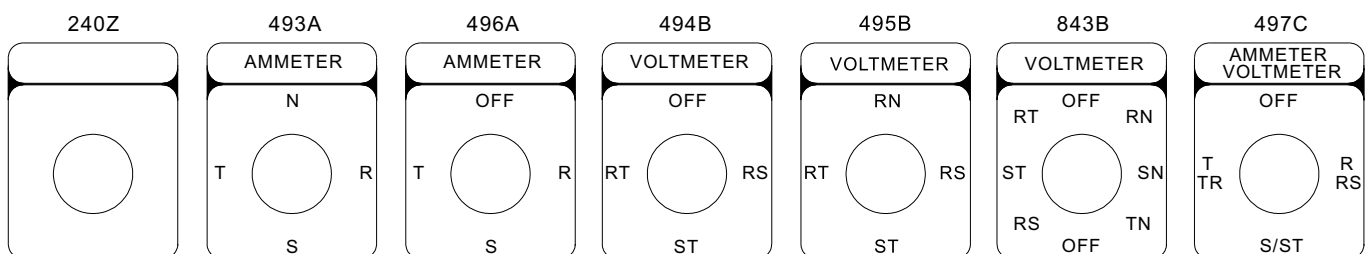


## Long plate designation



Designation	Signal	Description
1.Long plate dimensionsr	5P	48*60 plate
	7P	64*80 plate
2.Long plate number	240Z 497C	See page <a href="#">M7</a>
	3.Mingban color	None
Y		Black on a yellow background

## Long plate number



# tend CAM SWITCH (48mm AND 64mm SERIES)

TCS

■ Name plate designation TCS **4P** - **242** **Y**  
 ① ② ③

● Number designation: **2** **4** **2**  
 ① ② ③

Designation	Signal	Description
1.Name plate dimensions	4P 6P	48*48 64*64
2.Name plate number	240 843	See number designation on right
3.Mingban color	None Y	Silver black end Black on a yellow background

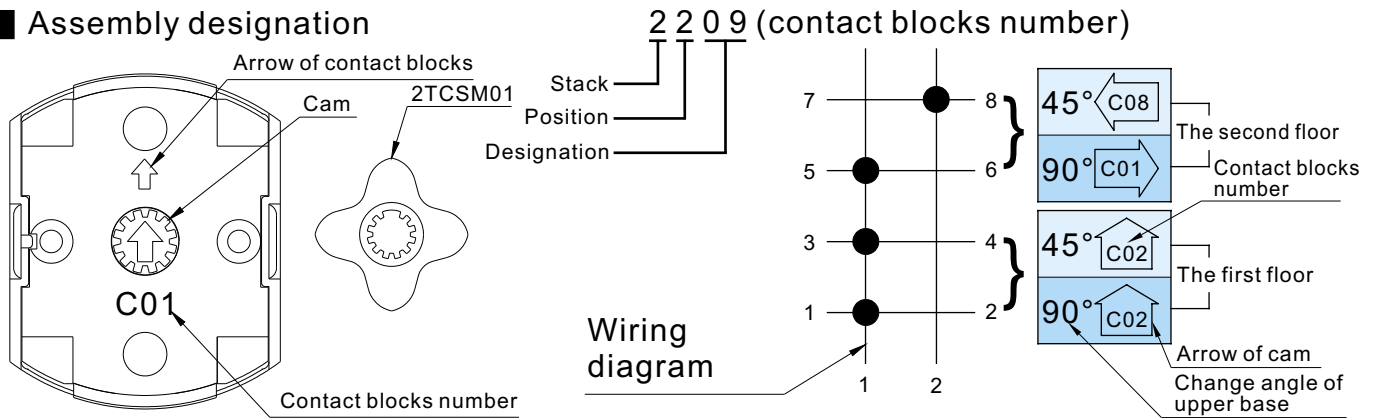
Designation	Signal	Description
1.Position	2~8	2~8 Positions
2.Turn angle	4 9	45° 90°
3.Designation	0~9	See page ⑧

## ● Name plate number

240	241	242	243	290	291	292	293
294	295	296	297	298	340	341	342
343	344	345	346	347	348	349	
390	391	392	393	394	395	396	440
441	442	443	444	490	491	492	493
494	495	496	497	540	541	542	543
640	641	642	740	741	742	840	841
842	843						



## Assembly designation

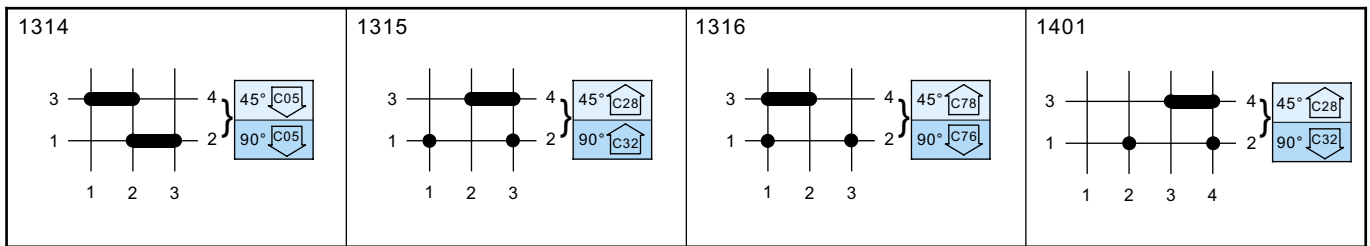


- Put cam to 2TCSM01, set the arrow of the contact blocks pointing "up", rotate cam and make cam's arrow pointing to the required direction. (see wiring diagram)
- Customer may order double-point contact coded as TCS□-C 01~CA1, or single-point contact coded as TCS□-S01~SA1
- Way of assembly: as illustrated above
- When the turning angle of upper base is 45°, the arrow of the first layer of contact coded CO2 points "up" while that of the second layer coded CO8 points to the left.
- When the turning angle of upper base is 90°, the arrow of the first layer of contact coded CO2 points "up", while that of the second layer coded CO1 points to the right.

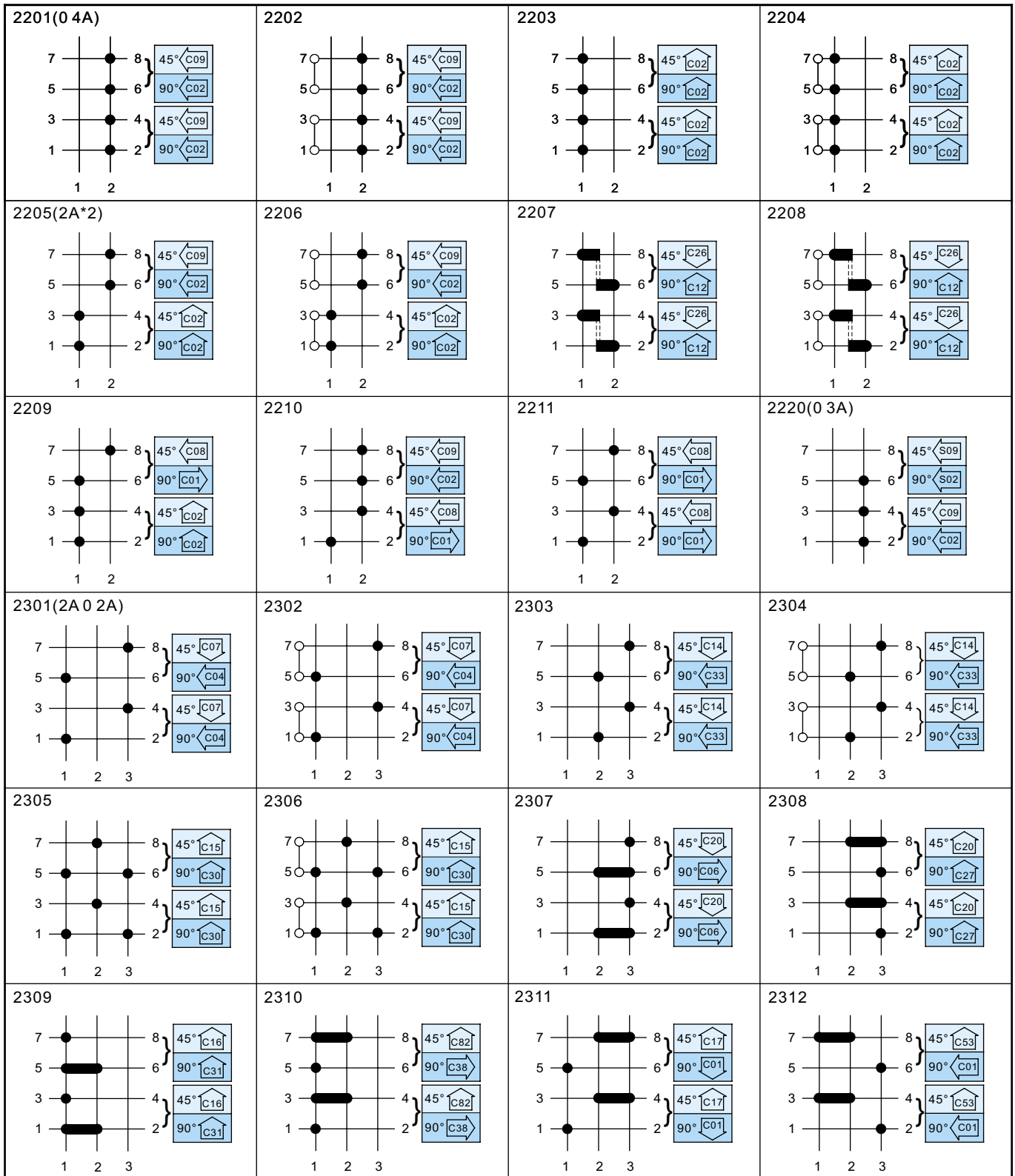
## Wiring Diagram

### One stack

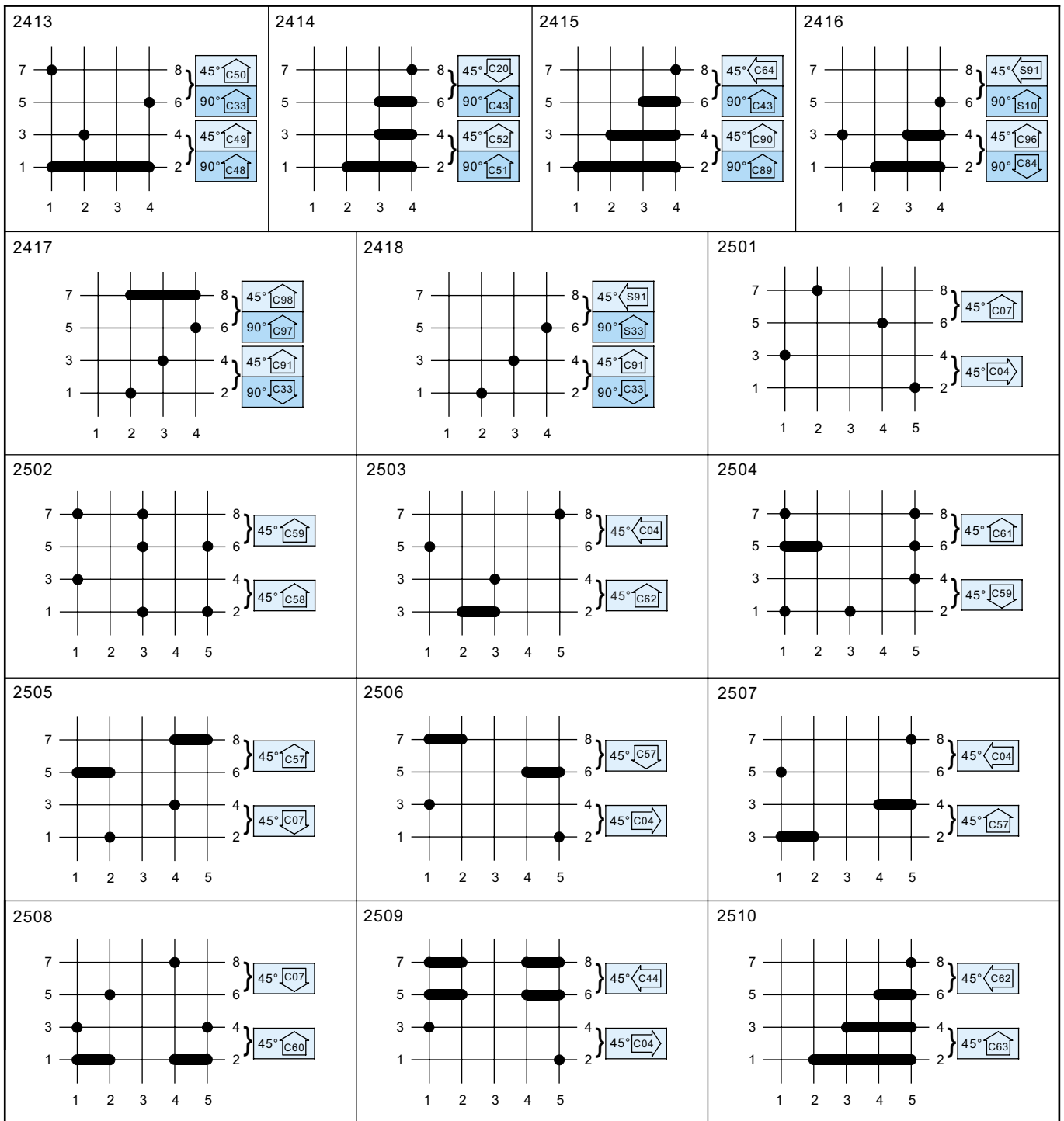
1201(0 2A)	1202	1203	1204
1205(1A*2)	1206	1207	1208
1209	1219	1220	1301(1A 0 1A)
1302	1303	1304	1305
1306	1307	1308	1309
1310	1311	1312	1313



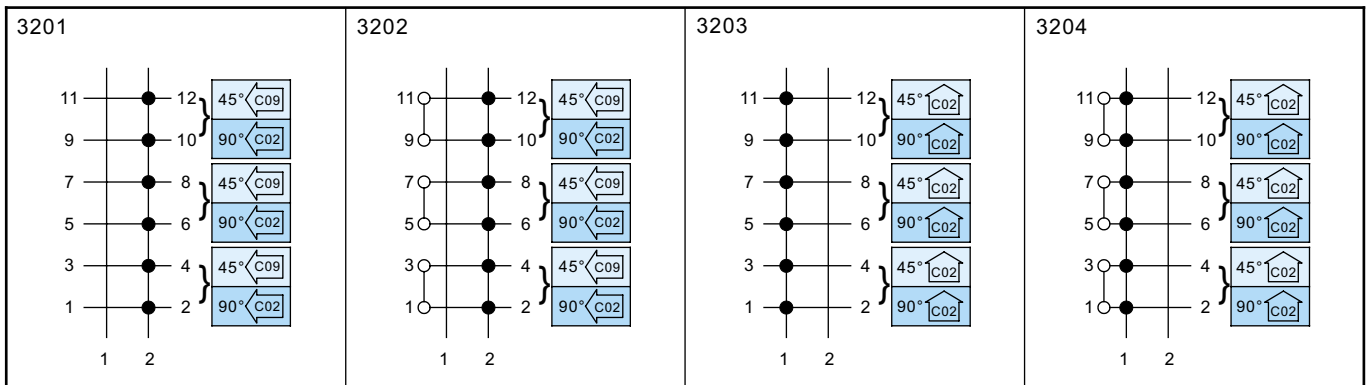
## Two stacks



<p>2313</p>	<p>2314</p>	<p>2315(1A*3)</p>	<p>2316</p>
<p>2317</p>	<p>2318</p>	<p>2319</p>	<p>2320</p>
<p>2321(3ØF.O.R 2P)</p>	<p>2322</p>	<p>2323</p>	<p>2324</p>
<p>2325</p>	<p>2326</p>	<p>2327</p>	<p>2328</p>
<p>2401(1A*4)</p>	<p>2402</p>	<p>2403</p>	<p>2404</p>
<p>2405</p>	<p>2406</p>	<p>2407</p>	<p>2408</p>
<p>2409</p>	<p>2410</p>	<p>2411</p>	<p>2412</p>



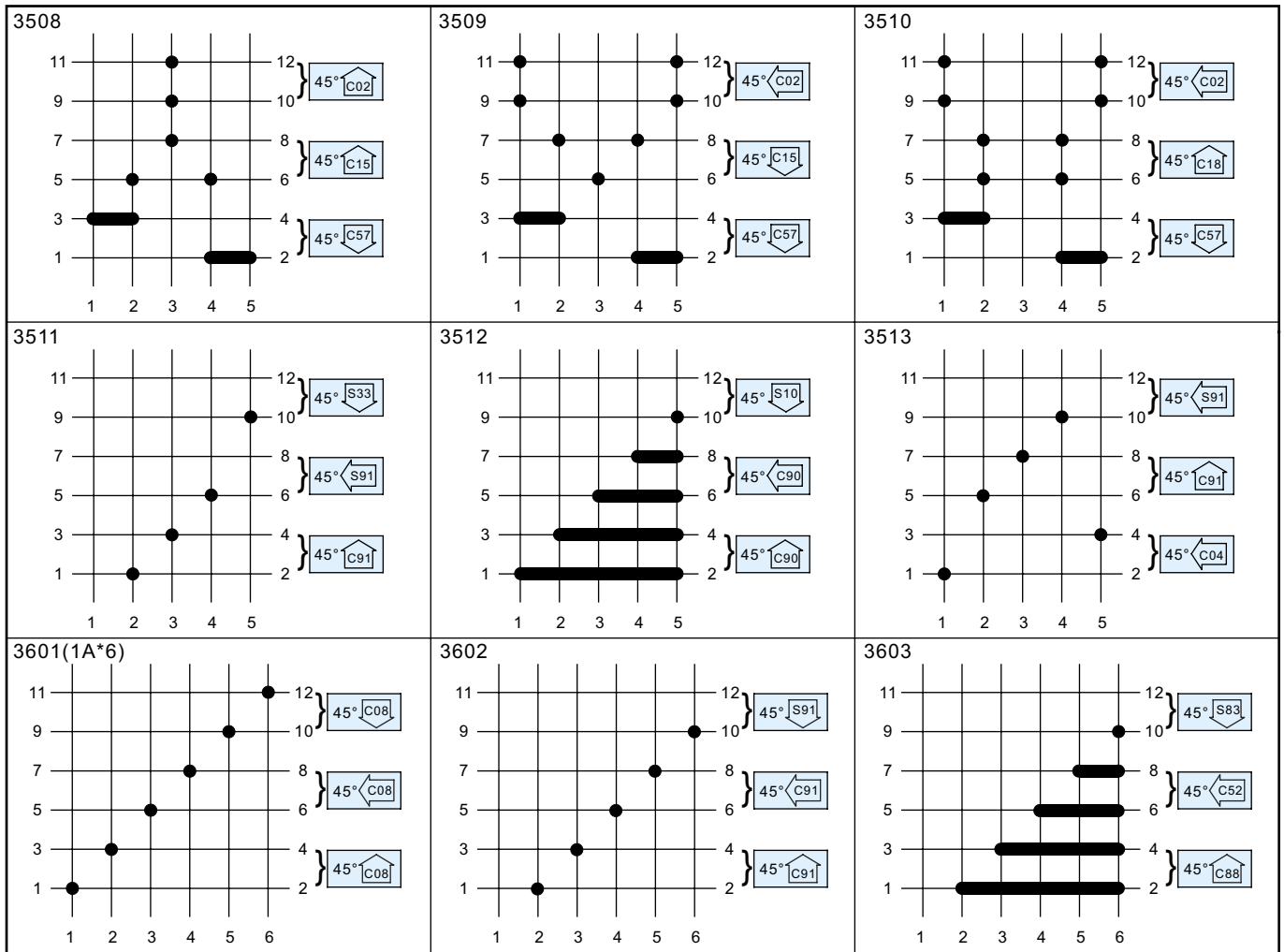
## Three stacks



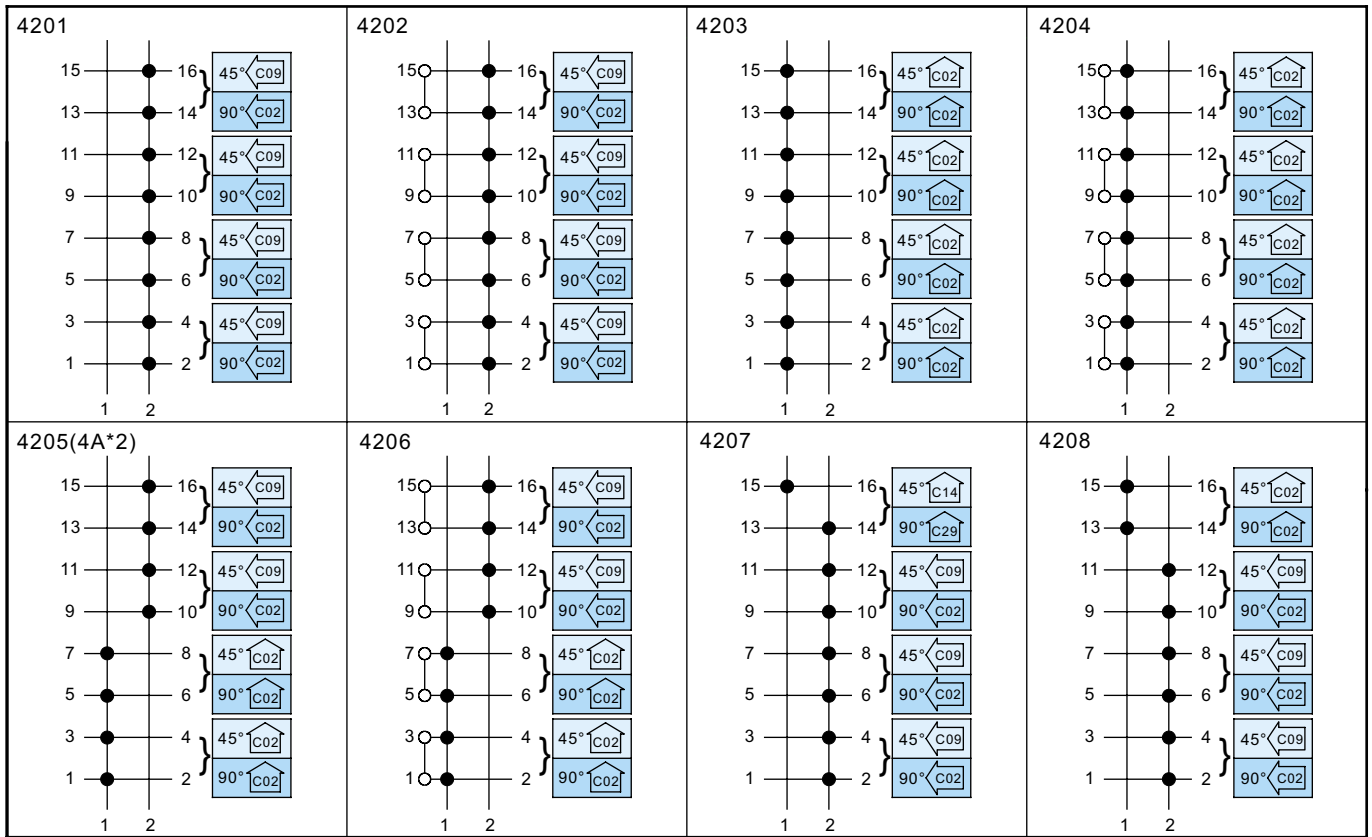
<p><b>3205(3A*2)</b></p>	<p><b>3206</b></p>	<p><b>3207</b></p>	<p><b>3208</b></p>
<p><b>3209</b></p>	<p><b>3210</b></p>	<p><b>3301(3A 0 3A)</b></p>	<p><b>3302</b></p>
<p><b>3303</b></p>	<p><b>3304</b></p>	<p><b>3305</b></p>	<p><b>3306</b></p>
<p><b>3307</b></p>	<p><b>3308</b></p>	<p><b>3309</b></p>	<p><b>3310</b></p>
<p><b>3311(2A*3)</b></p>	<p><b>3312</b></p>	<p><b>3313</b></p>	<p><b>3314</b></p>

<p><b>3315</b></p>	<p><b>3316(1Ø.F.O.R)</b></p>	<p><b>3317(3Ø.F.O.R)</b></p>	<p><b>3318</b></p>
<p><b>3319</b></p>	<p><b>3320(#705)</b></p>	<p><b>3321</b></p>	<p><b>3322</b></p>
<p><b>3323</b></p>	<p><b>3324</b></p>	<p><b>3325</b></p>	<p><b>3326</b></p>
<p><b>3327</b></p>	<p><b>3328</b></p>	<p><b>3401</b></p>	<p><b>3402</b></p>
<p><b>3403</b></p>	<p><b>3404</b></p>	<p><b>3405</b></p>	<p><b>3406</b></p>

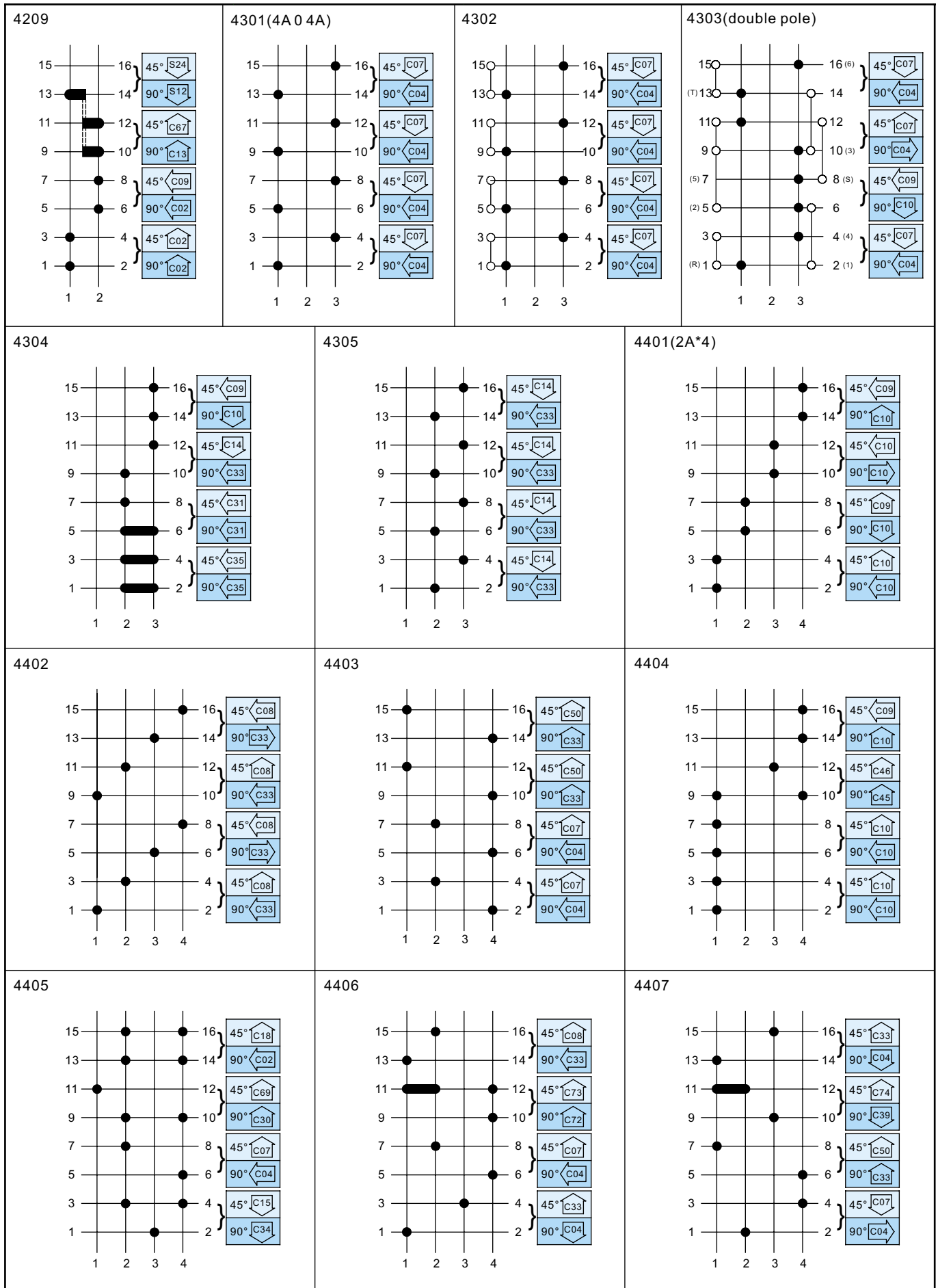
<p><b>3407</b></p>	<p><b>3408</b></p>	<p><b>3409</b></p>
<p><b>3410</b></p>	<p><b>3411</b></p>	<p><b>3412</b></p>
<p><b>3413</b></p>	<p><b>3414</b></p>	<p><b>3501(1A*5)</b></p>
<p><b>3502</b></p>	<p><b>3503</b></p>	<p><b>3504</b></p>
<p><b>3505</b></p>	<p><b>3506</b></p>	<p><b>3507</b></p>

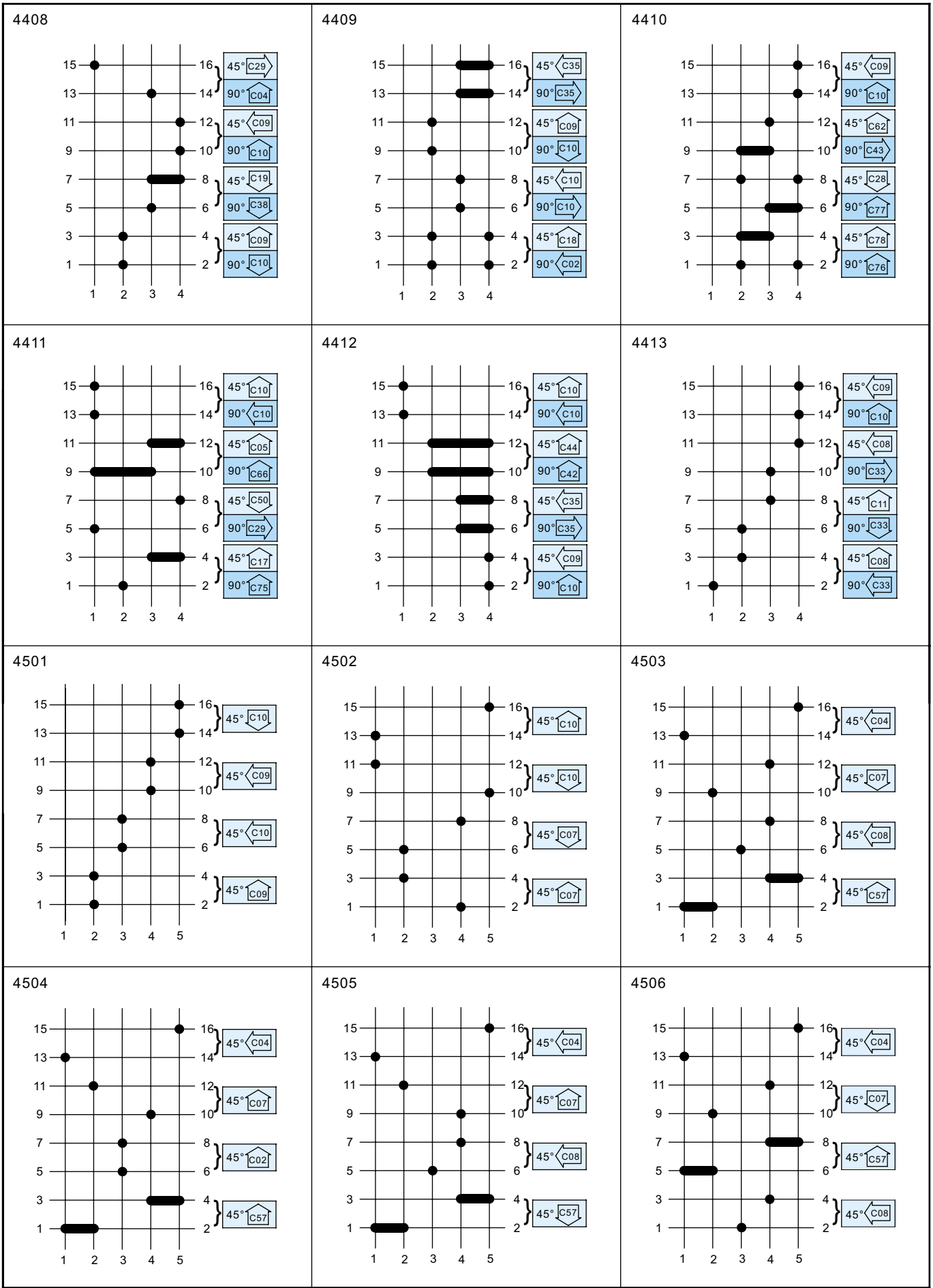


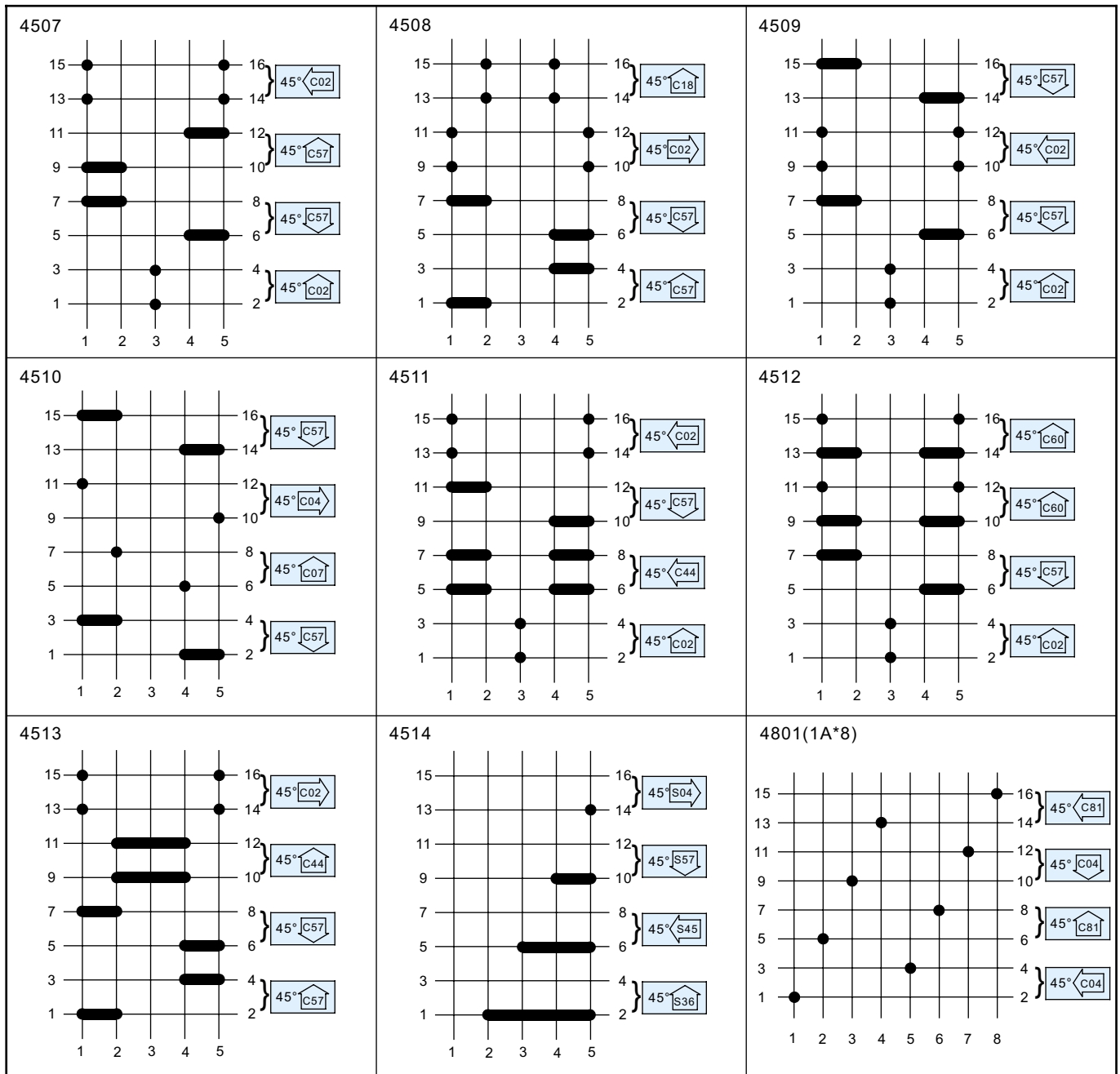
## Four stacks



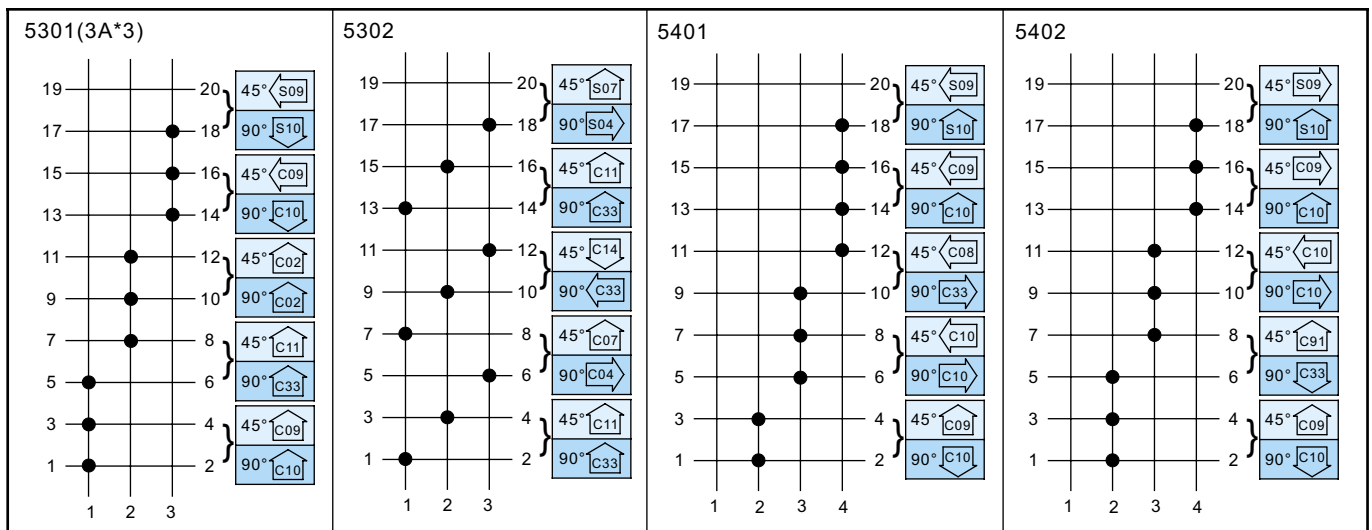


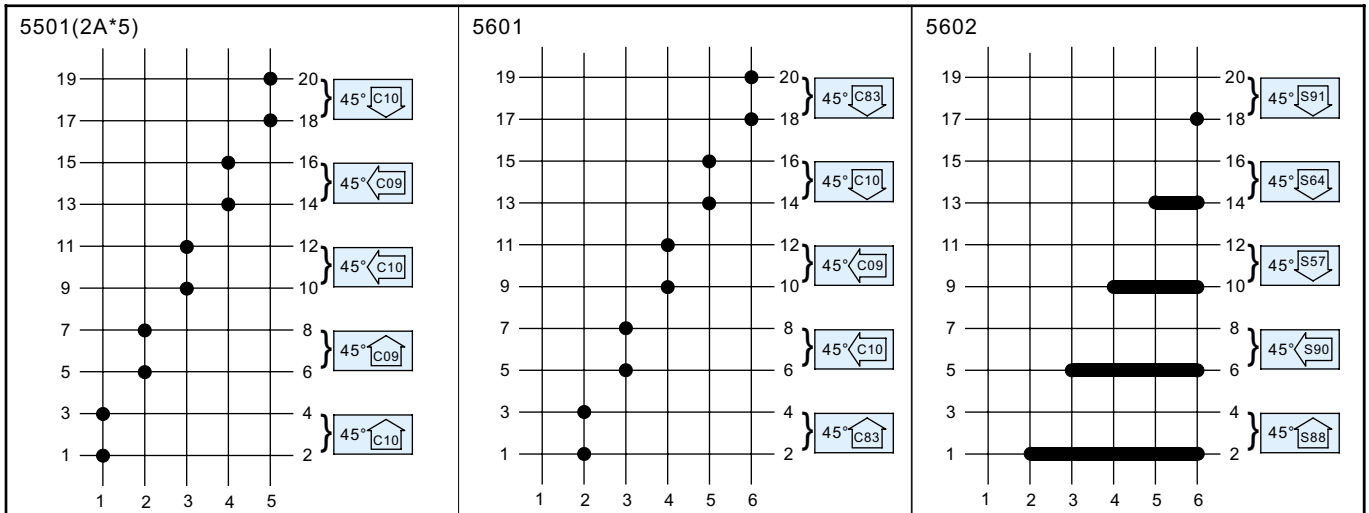






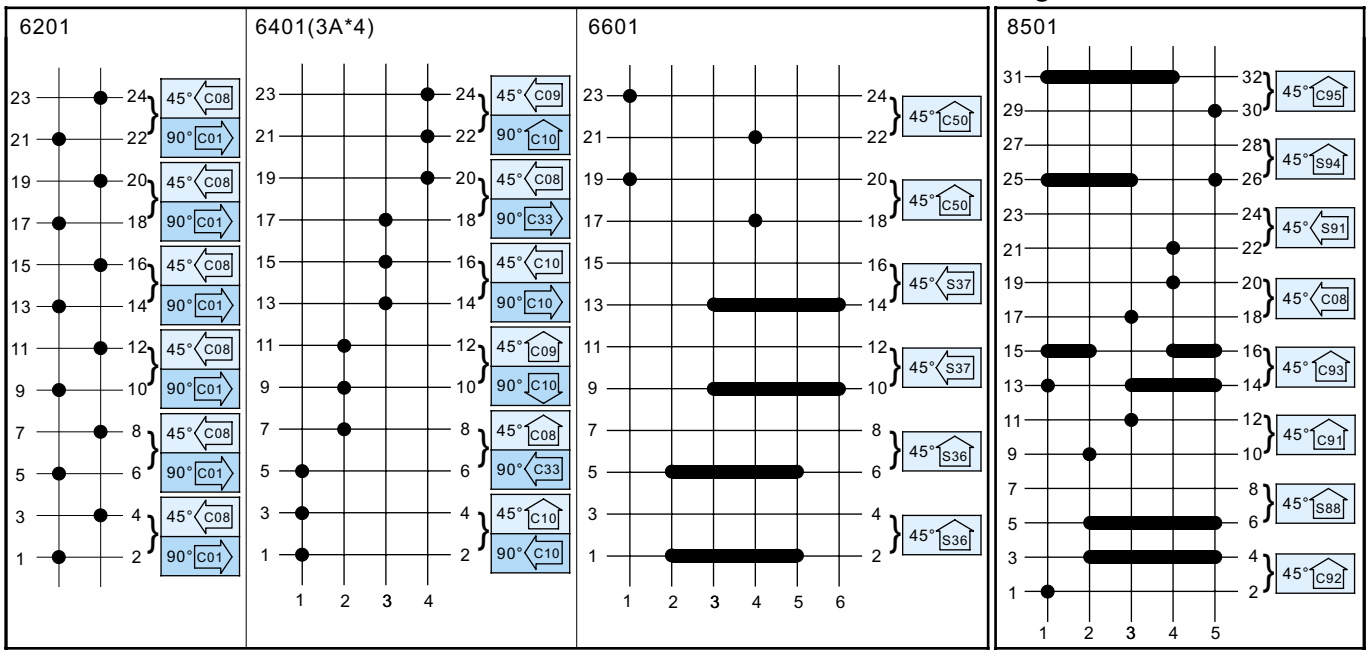
## Five stacks





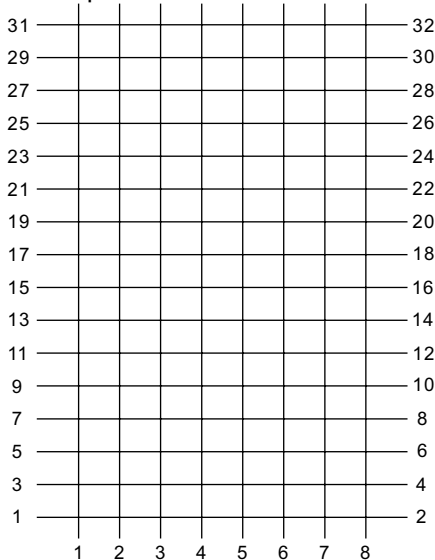
## Six stacks

## Eight stacks



### Order from for special contacts.

● If customer has special contact requirement, please copy the following blank contact diagram and mark the required contacts.



Size	<input type="checkbox"/> 2 (Ø22/Ø25mm)
	<input type="checkbox"/> 3 (Ø30mm)
	<input type="checkbox"/> 4 (48*48mm)
	<input type="checkbox"/> 5 (48*60mm)
	<input type="checkbox"/> 6 (64*64mm)
	<input type="checkbox"/> 7 (64*80mm)
	Handle
<input type="checkbox"/> L (Long handle)	
<input type="checkbox"/> O (Aniseed handle)	
<input type="checkbox"/> K (Key)	
Position	<input type="checkbox"/> 2-8 Positions
Turn angle	<input type="checkbox"/> 4 (45°)
	<input type="checkbox"/> 9 (90°)

Plate designation	<input type="text"/>	(See page (M)8)
Long plate designation	<input type="text"/>	(See page (M)7)
Capacity	<input type="checkbox"/> 1 (10A)	
	<input type="checkbox"/> 2 (16A)	
	<input type="checkbox"/> 3 (25A)	
Return	<input type="checkbox"/> Yes	
	<input type="checkbox"/> No	
Action	<input type="checkbox"/> Contact <input type="checkbox"/> Hold <input type="checkbox"/> Return Hold	
Piece	<input type="text"/>	PCS.

## Feature

- The upper and lower bases of Ø22, Ø25, and Ø30 series can be push-button assembled or disassembled as per our patent. Upper base, fixed base and contact are three detachable parts.
- Unique modular design of contact blocks keeps internal parts from falling apart when contact blocks are disassembled or replaced.
- Can assemble or disassemble contact blocks to suit for various models yet without risking excessive stock.
- Contact blocks can be added click-on easily, no need to unscrew.
- Connecting screws are fastened from the back rather than normally from the side. It makes wiring easier.
- A special design to keep connecting terminals and screws in the contact blocks can prevent users from electric shocking.
- All the connecting pieces of terminals are covered to avoid from electric shocking.
- Capacities are differentiated by colors of contact blocks: blue for 10A; gray for 16A and black for 25A.



## Specifications

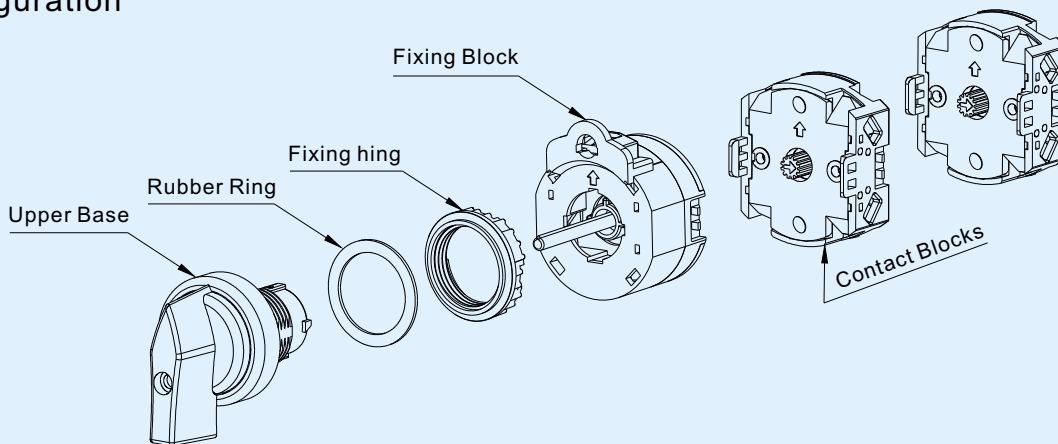
Voltage	Capacity	AC-3(kw)		AC-23A(kw)		AC-21A lu=lth	Rated roltage	AC-3(HP)		Motor load
		3 ph.	1 ph.	3 ph.	1 ph.			3 ph.	1 ph.	
220V~240V		1.5	0.55	1.8	0.75	10A	120V	0.75	0.33	10A
380V~440V		2.2	0.75	3	1.1		240V	1	0.75	
660V~690V		2.2	0.75	3	1.1					
220V~240V		3	1.5	4	2.2	16A	120V	1.5	0.5	16A
380V~440V		5.5	2.2	7	3		240V	3	1.5	
660V~690V		5.5	2.2	7	3					
220V~240V		4	3	5.5	3	25A	120V	3	1.5	25A
380V~440V		7.5	3.7	11	5.5		240V	7.5	3	
660V~690V		7.5	3.7	11	5.5		480V	10	5	

IEC 60947-3, EN 60947-3

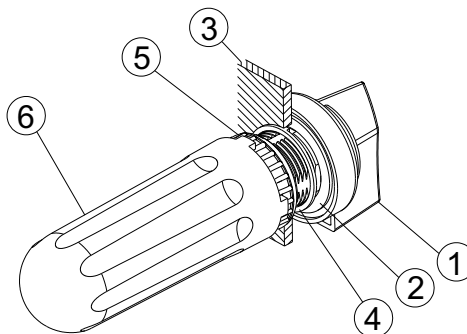
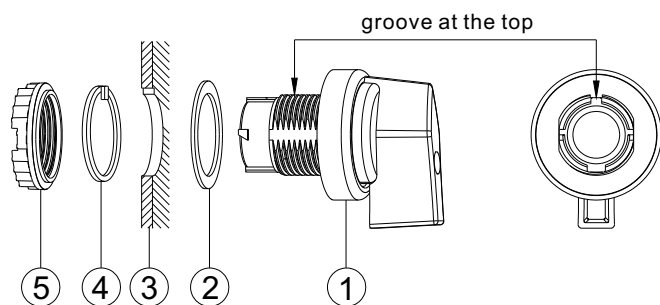
VDE 0660 part 107

HD A300 UL 77B7

## Configuration



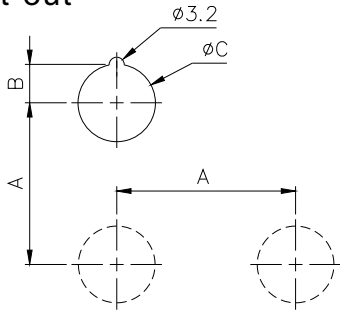
## MOUNTING METHOD



①	②	③	④	⑤	⑥
Upper base	Rubber ring	Panel	Stop ring	Fixing ring	Fixing tool

- Install the operating head and rubber ring through the front panel and tighten fixing ring with fixing tool.

## Panel cut-out

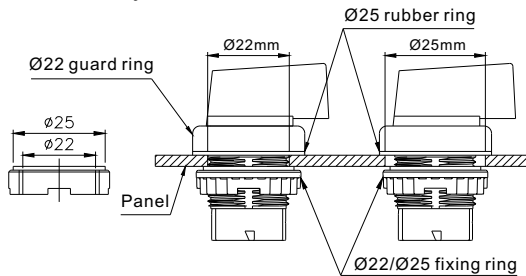


DIMENSIONS(mm)

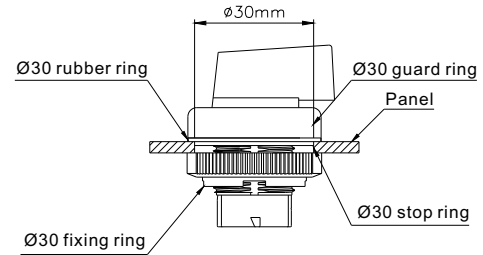
Designation	Ø22	Ø25	Ø30
A	60 min		
B	11.2	12.7	15.2
C	22.4	25.4	30.4

## Ø22mm/Ø25mm series are the same dimensions with common fixing ring.

● The assembly method for Ø22/Ø25 series

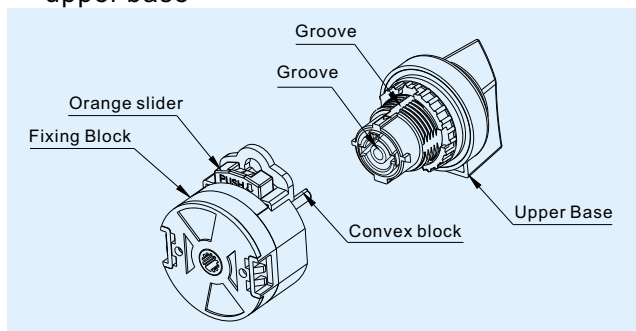


● The assembly method for Ø30 series



## Assembly instruction

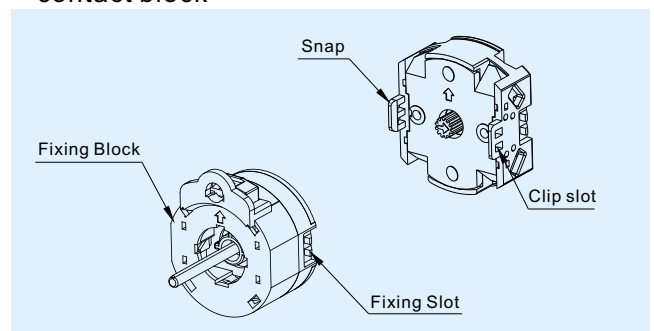
● Assembly and disassembly of fixing block with upper base



Assembly: Align the hole on top of fixing block with groove on the upper base and push them together.

Disassembly: Place downward by hand or use flat screw-driver to push down the orange button thru the hole on top of the fixing block.

● Assembly and disassembly of fixing block with contact block



Assembly: Align the fixing slot on the fixing block to clip slot on the contact block.

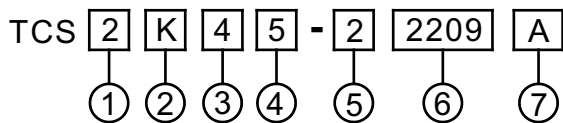
Disassembly: Use flat screwdriver toward fixing slot to lift up clip and snap for disassembly.

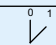
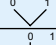
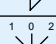

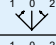
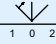
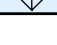
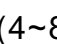
## Endosure contact

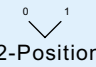
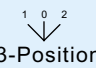
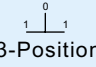
<p><b>TCS-2H</b></p>	<p><b>TCS-2L</b></p>	<p><b>TCS-2R</b></p>
<p><b>TCS-3L</b></p>	<p><b>TCS-3R</b></p>	<p>● The middle terminals of TCS-3L/TCS-3R can be snapped and turned into over passing terminals.</p> <p>Breaking</p>

Before placing an order for finished products, please refer to the explanation of model numbers shown in this page.

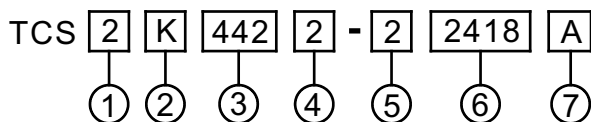
## Model designation(2~3 positions)



Designation	Signal	Description
1. Mounting Hloe	2	22mm/25mm
	3	30mm
2. Type	S	Knob operator
	K	Key operator
3. Positions	1	 45° 2-Position
	2	 90° 2-Position
	3	 45° 2-Position spring return from right
	4	 45° 3-Position
	5	 90° 3-Position
	6	 45° 3-Position spring return from right and left
	7	 45° 3-Position spring return from left
	8	 45° 3-Position spring return from right

4. Key Withdrawable (Only key operator)	1	 2-Position	0,1 Key with-drawable	
	2		0 Key with-drawable	
	3		1 Key with-drawable	
	4	 3-Position	0,1,2 Key with-drawable	
	5		0 Key with-drawable	
	6	 3-Position	0,1,2 Key with-drawable	
	7		0 Key with-drawable	
5. Capacity	1	10A		
	2	16A		
	3	25A		
6. Wiring diagram	See page <a href="#">(M)9</a> ~ <a href="#">(M)20</a>			
7. Key number	A	3313	E	3131
	B	1313	F	3133
	C	1331	G	3212
	D	3113	H	3331

## Model designation(4~8 positions)

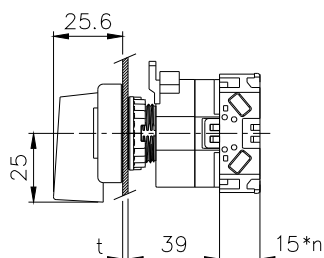


Designation	Signal	Description
1. Mounting Hloe	2	22mm/25mm
	3	30mm
2. Type	S	Knob operator
	K	Key operator

3. position, turn angle plate number	440 ↑ 842	See page <a href="#">(M)8</a>		
4. Key Withdrawable (Only key operator)	1	Key with-drawable		
	2	0 Key with-drawable		
5. Capacity	1	10A		
	2	16A		
	3	25A		
6. Wiring diagram	See page <a href="#">(M)9</a> ~ <a href="#">(M)20</a>			
7. Key number	A	3313	E	3131
	B	1313	F	3133
	C	1331	G	3212
	D	3113	H	3331

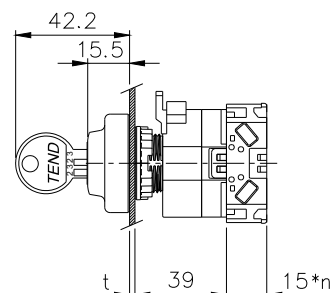
## Dimendions

TCS2S□□-□□□



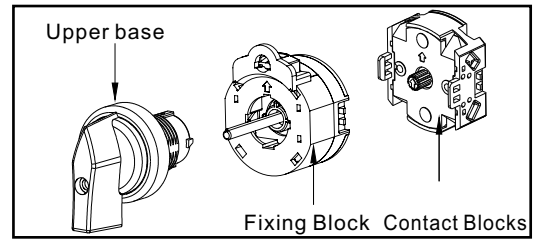
t=8max  
N=number of contact blocks

TCS2K□□-□□□

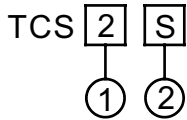


t=8max  
N=number of contact blocks

As to the order of components for DIY assembly, please refer to the following assembly illustration diagram.



## Upper base designation

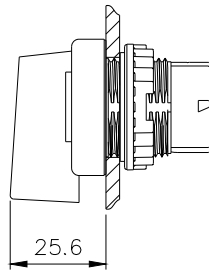


Designation	Signal	Description
1. Mounting Hole	2	Ø22/Ø25
	3	Ø30

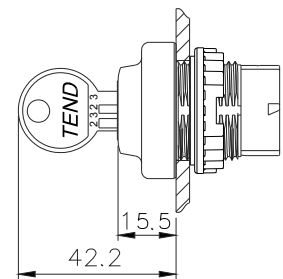
2. Handle	S	Short handle
	K	Key

## Dimensions

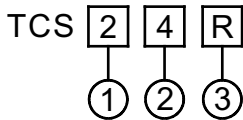
### TCS2S, TCS3S



### TCS2K, TCS3K



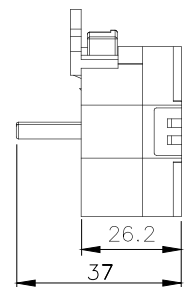
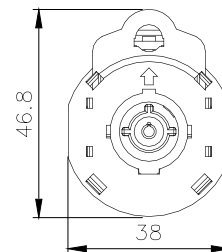
## Fixing block designation



Designation	Signal	Description
1. Position	2~8	2~8 Position
2. Turn angle	4	45°
	9	90°
3. Operation	None	Hold
	R	Spring return (45°, 2 position, 3 position only)

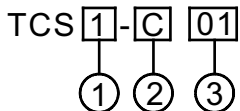
## Dimensions

TCS □ □ □



● 22mm, 25mm, 30mm share base

## Contact block designation

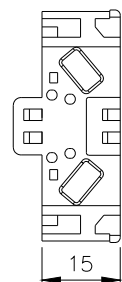
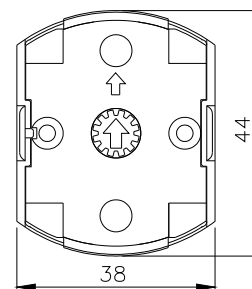
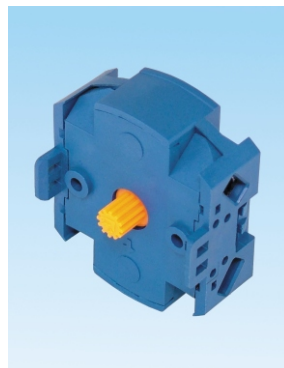


Designation	Signal	Description
1. Capacity	1	10A
	2	16A
	3	25A
2. No. of Contacts Fitted	S	Single-point contact
	C	Double-point contact
3. Contact base number	C01 CA1	See page (M)9~(M)20

## Dimensions

TCS □ - C01~CA1

TCS □ - S01~SA1

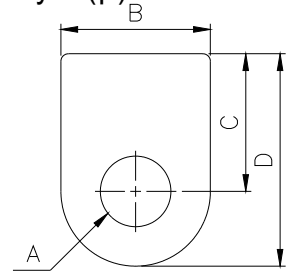




■ Ø22/Ø25/Ø30 legend plates for operating devices, aluminum(m) or acrylic(p)

- TN22P- (Acrylic 22)
- TN22M- (22 Aluminum)
- TN25P- (Acrylic 25)
- TN25M- (25 Aluminum)
- TN30P- (Acrylic 30)
- TN30M- (30 Aluminum)

	A	B	C	D
TN22P	Ø22.3	41	32	52.5
TN22M	Ø22.2	31	26.7	42
TN25P	Ø25.5	41	32	52.5
TN25M	Ø24.8	31	26.7	42
TN30P	Ø30.5	41	32	52.5
TN30M	Ø30.2	38.3	32.7	51.9



13	14	15	16	17	18	19	20
OFF ON	ON ON	ON OFF ON	FWD REV	FWD OFF REV	AUTO MANU	AUTO OFF MANU	STOP START

21	22	00
MANU OFF AUTO	1 0 2	

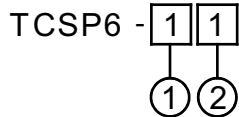
71	72	73	74					
○		○						


## tend MULTI-OFF OF THE SWITCH

### ■ Characteristics

- Use out of the need to handle before switching window in the ON position for the red, in the OFF position to green.
- The switches were 45 degrees - date, TCS64 assembly aperture and the same panel (see page TA20) Holespacing 48 mm \* 48mm.
- Block capacity to tap the color distinction 10A of blue, gray 16A, 25A black.

### ■ Model designation



Designation	Signal	Description
1.Capacity	1	10A
	2	16A
	3	25A
2.Contact map	1	1a 0 1a
	2	1a 0 1a Residue Report

### ■ Exterior Dimensions, and the panel plans tap

